

mediaprofil

**look
beyond
the surface
—
inspiration
2019**

—
**as you like it;
dress your spaces,
follow your style,
create new trends,
always looking
beyond the surface**

mediaprofil is the partner
to co-design and manufacture
foil-based frontals, components,
and ready-to-assemble solutions
for the furniture industry.



—
**timeless charm
goes beyond
appearance**

**mediaprofil
manufactures your
desires with the
utmost care, quality
of the coverings,
perfect finishes,
technical solutions
to guarantee original
characteristics that
resist the passing
of time**

**inspiration
2019**

**sustainability
is lightness
p6**

**inspiration #1
supermatt
poudre colors
p8**

**inspiration #2
metallics
p12**

**inspiration #3
materics
p16**

**inspiration #4
gloss
p20**

**products &
applications
p24**

**finishes
p26**

**materials
p27**

**foil application
technologies
p28**

**technology
p30**

**quality
p32**

**co-innovation
p34**

sustainability is lightness

We have lines with specific technologies and the best cost-effective process for the production of lightweight boards. Honeycomb lightweight board allows a totally sustainable approach to the manufacturing of furniture component through the reduction of the environmental impact, the reduction of wood utilization, saving on logistic cost and impact. It offers to the market a fully recyclable, lightweight and customer friendly solution. The lightweight board can be wrapped or post formed with all polymeric or paper-based foils.



honeycomb lightweight boards

Sustainability comes from responsibility: our core leading principle since the beginning. We see it as a never-ending journey that help us to improve day by day keeping our focus on.

Economic and products sustainability to grow in efficiency and competitiveness, environmental sustainability to respect our planet and our community.

**-30%
wood**

reduction
of natural
resources use

-CO₂

saving on
logistic cost
and impact

**-30%
weight**

customer
friendly solution,
easier to carry
and assemble



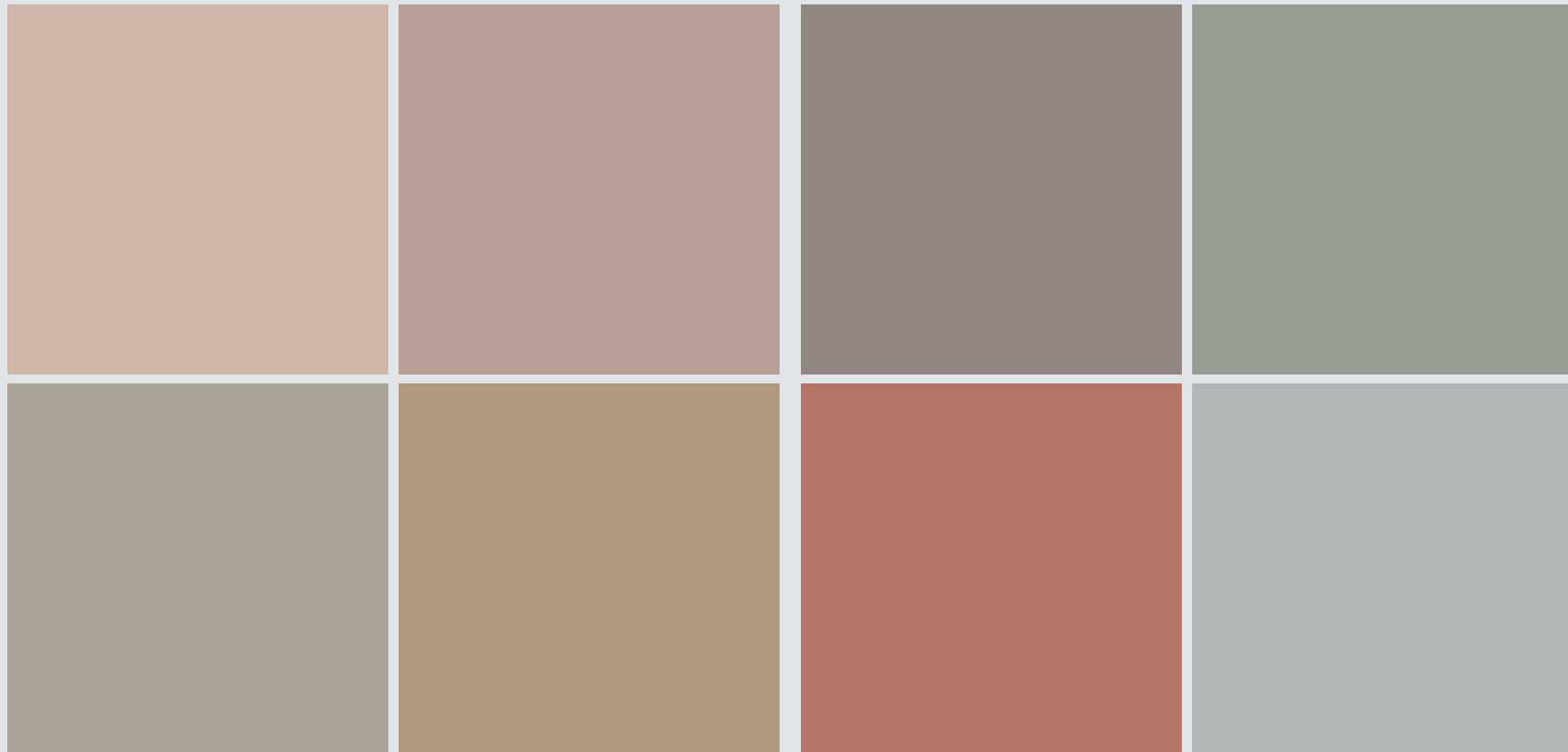
inspiration #1 supermatt poudre colors

Cocoon-like environment,
gentle combinations of
super matt finishing, right,
homogenous and smooth
to the tact, requires regular
surfaces, resistant to use
and anti-fingerprint,
able to maintain the
magical and the softness
of poudre colors.



inspiration #1

supermatt poudre colors



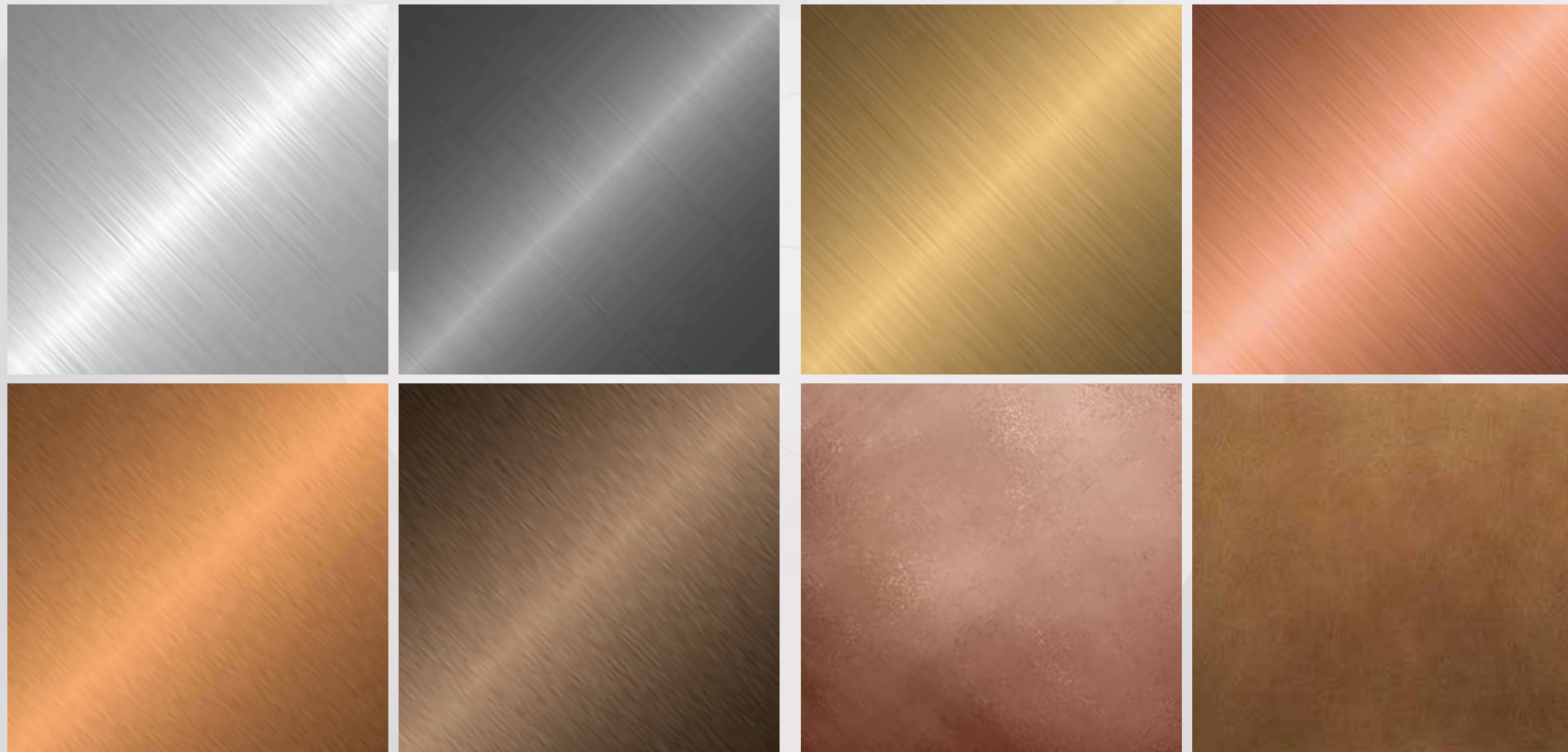
inspiration #2 metallics

The richness of metallics with precious matching, contemporary or vintage. Gold, copper, silver, brass, titanium, zinc, gloss or textured or mirror finishes, to stimulate senses and to create atmosphere with emotional effects. Durability to guarantee the first day feeling to last.



inspiration #2

metallics



inspiration #3 materics

Fine timber and veining, concrete, clays, marbles, leathers, carbon: respecting the beauty of the material mean perfect applications and finishes, tactile quality and vibrations with results corresponding to the natural one.



inspiration #3

materics



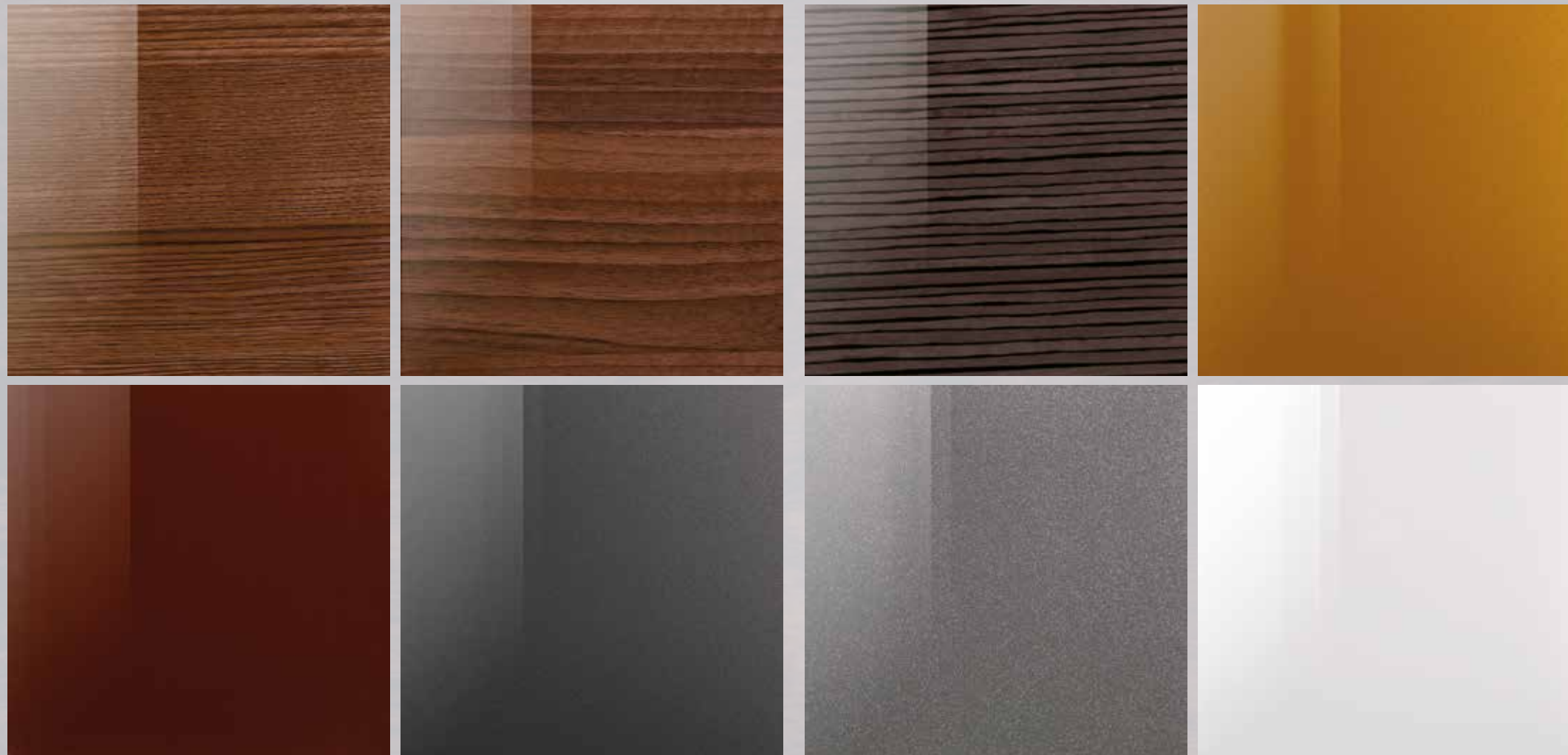
inspiration #4 gloss

Super gloss wood to explore an amazing world of lights, glows and reflections, evergreen vintage finishes to be matched to contemporary one to intrigue, inspire and prompt emotions. No imperfection should take the gloss off vintage and refined atmosphere.

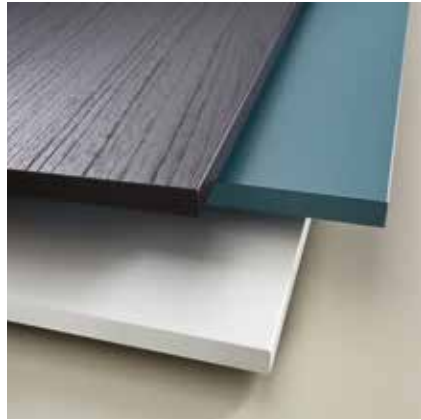


inspiration #4

gloss

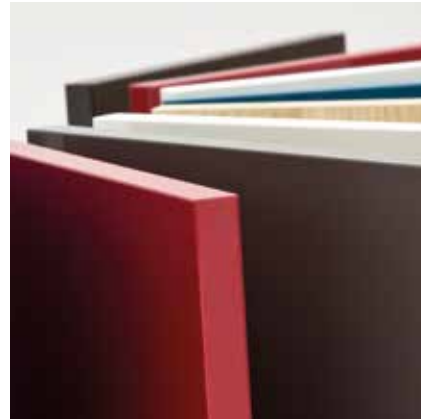


products & applications



Postformed doors and components

We own the best technology for the post-forming of doors and components. Production lines are designed around each specific material, allowing a broad range of finishes from super matt to high gloss; from solid colours to wooden patterns; from smooth to deep embossed surfaces. With no compromise between cost-effectiveness and quality.



Fully wrapped doors and components

We have been the pioneers in the production of fully wrapped components with sections up to 650 mm. Our processing technology allows extreme resistance against humidity and moisture that finds optimal application in wet environments like kitchens or bathrooms.



Framed doors

Our specialised technology centre for the production of framed doors, with paper or polymeric foils, 45°, 90°, and French cut assembly typologies allows both modern and traditional fronts.



Profiles and accessories

We produce a wide range of fully wrapped and post formed profiles. Profiles are the starting point for the creation of framed doors as well as frames, cornices, plinths, and decorative elements. We can supply a wide range of accessories and complements.



Integrated handles doors, J-pull

Our ability in post-forming allows manufacturing of a wide range of shapes. From the smallest and minimal radius to the complex forms enabling our products to fit perfectly with the clean design as well as with the most sophisticated one.



Flat laminated and four sides edge-banded components

Thanks to the finest technology for the edge-banding process, mediaprofil can produce high quality four sides edge-banded fronts and components. The optimal edge-banding process allows almost invisible joints and the highest resistance against moisture and humidity. Aluminium, glass and mirror effect edge-bands can be applied to create beautiful contrasts with the foil surface.



Lightweight components

We have lines with specific technologies and the best cost-effective process for the production of lightweight boards. Honeycomb lightweight board allows a totally sustainable approach to the manufacturing of furniture component through the reduction of the environmental impact, the reduction of wood utilization, saving on logistic cost and impact. It offers to the market a fully recyclable, lightweight and customer friendly solution. The lightweight board can be wrapped or post formed with all polymeric or paper-based foils.



Flat Pack furniture

The experience in the engineering and production of components led us to a leadership role in the production of Flat Pack furniture. The endless combinations of materials and finishes, matched with extremely competitive and high-quality production processes, make us a reference point for the furniture retailer chains.

finishes



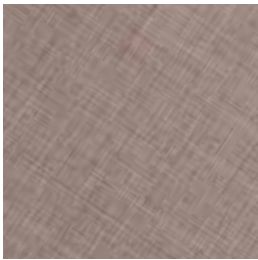
High gloss
We are the leader in the production of high gloss components. We can guarantee the highest quality in the market for high gloss surfaces with the application of polymeric foils on MDF, particleboard and lightweight board. Our excellent quality is the result of the perfect support preparation, gluing process and materials development with a focus on durability properties. Environmentally friendly coverings are developed to be scratch resistant, light fastness and easy care in everyday use.



Supermatt
Extremely matt surfaces with soft touch are developed with the utilisation of polymeric or paper-based foils. Components are designed to be anti-fingerprint, light fastness, resistant to abrasion and easy to clean. Supermatt components can be produced with a repairable feature.



Mirror finishing
Special PET foils with mirror effect are used for the realisation of lightweight and competitive components. These components are easy and safe to be produced, transported and handled by the final customers. They are a sustainable alternative to the utilisation of the real and heavy mirror.



Textured
We develop coverings with total fidelity to natural materials. Deeply embossed and high textured materials achieve a result with an almost invisible difference between foiled materials and natural ones.



Wooden pattern
We produce hyper-realistic components with any wooden texture and finish. Possibilities are endless.



Metallic
Metal finishes find in the foil execution the pinnacle of beauty. Foiled components with metal finish are lightweight, sustainable and long-lasting.

materials

Strong investment in research and development, focusing on raw materials and processing technology awards mediaprofili with a leading position in the market, thanks to the excellent results achieved in terms of quality and processes enabled.

Coverings

Polymeric foils including PET, PP, ABS - PMMA in the virgin and recycled version

We apply polymeric foils with thickness from 0,05 to 2 mm. Polymeric foils adapt to any finish (High gloss, Supermatt, Mirror, Textured, Wooden pattern, Metallic). Thanks to the application with PUR glue they are particularly suitable for the realisation of fronts and components intended for wet environment. Polymeric foils are environmentally friendly, offer high chemical resistance, light fastness, easy care and durable. They can be applied with any shape and radius in profile wrapping, 360° wrapping, post-forming of flat lamination execution.

Paper foils
We are applying pre and post impregnated paper foils from less 30 g/m² weight. The finishes range is never-ending. The cost-effectiveness of the paper and the associated production process makes this kind of material a very competitive one for the production of any part of the furniture. Papers are treated to be resistant against abrasion and lightfastness. CPL foils provide excellent anti-scratch properties, long lasting performances and are extremely resistant against impacts.

Supports



Particleboard
We are continuously investing in the optimal preparation of the particleboard surface to ensure the achievement of the highest quality results.



Honeycomb
We produce honeycomb board on which it is possible to apply any type and finish of foils.



MDF
A suitable material for the production both of the smallest and most complex profiles as well as for the doors.

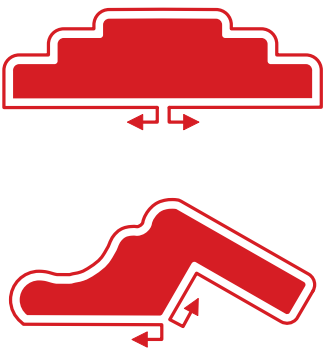


Special support
Wooden-based engineered supports can be used to achieve extreme mechanical strength.

foil application technologies

We own all technologies needed for the application of any foil with continuous process.

Production is divided into specialised sites to maximise process efficiency. Supports are carefully prepared through technologies developed in-house which combine avant-garde techniques for the sanding, soft-forming, and filling of panels. Wrapping, post-forming and flat lamination operations employ the highest performance PUR gluing systems, able to provide our products with incredible durability.



Profile wrapping



90° post-forming



180° post-forming



360° wrapping



J-pull post-forming



Flat lamination

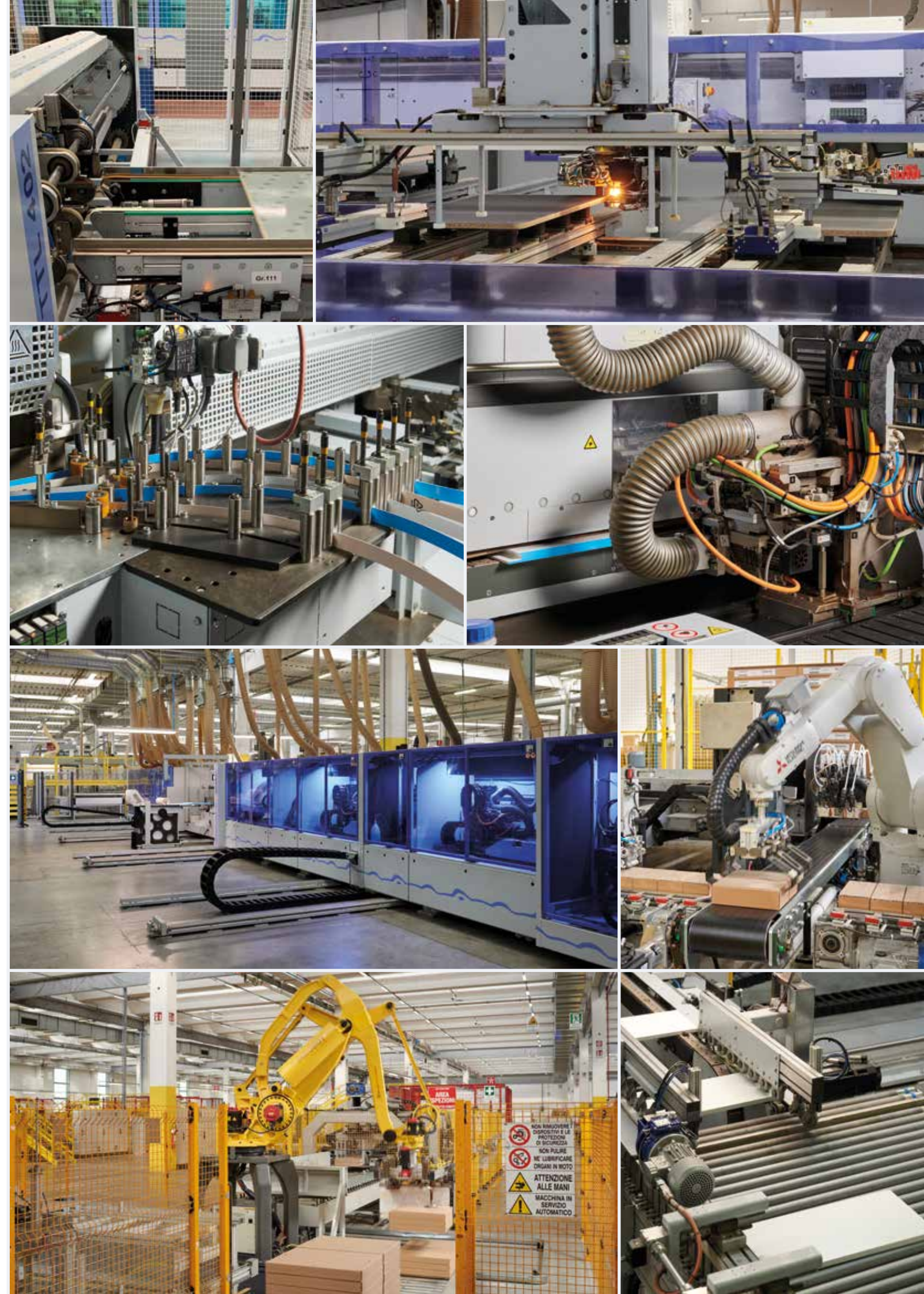
from all polymeric to paper-based foils, we master any wrapping technology to match clients' needs and manufacture products able to adapt to any room, kitchen, living, bedroom, bathroom or office

technology

We own the most advanced technologies for the manufacturing of wrapped and post-formed components made with the application of polymeric and paper-based foils.

Each productive plant focuses on a core processing technique to guarantee excellence in every product.

- profiles and framed fronts with polymeric and paper-based foils
- post-formed and fully wrapped surfaces with polymeric foils
- post-formed surfaces with paper-based foils
- lightweight components
- ready to assembly packaging and shipping departments
- doors packaging and shipping departments
- edge-banding components CNC operations
- product development laboratory



quality

We maintain a prominent position in the industry by designing and manufacturing products with a focus on quality. By defining appropriate procedures and training, our management system ensures the consistent quality and continuous improvement of our products and processes.

Particular focus goes to:

- **quality control of incoming materials**
Incoming materials are systematically controlled and tested before entering the production cycle
- **total production process quality control**
Our quality management system complies with the UNI EN ISO 9001:08 standard, every single process undergoes strictly controls
- **continuous product testing in the internal lab**
The Product Development Laboratory equipment can test in-house chemical and mechanical requirements
- **monitoring of released product performance in the market**
The product journey does not stop after the delivery; our after-sales quality process is an ever-growing relationship with our clients and the final customer. Receiving feedback from the market allows us to continue learning and improving



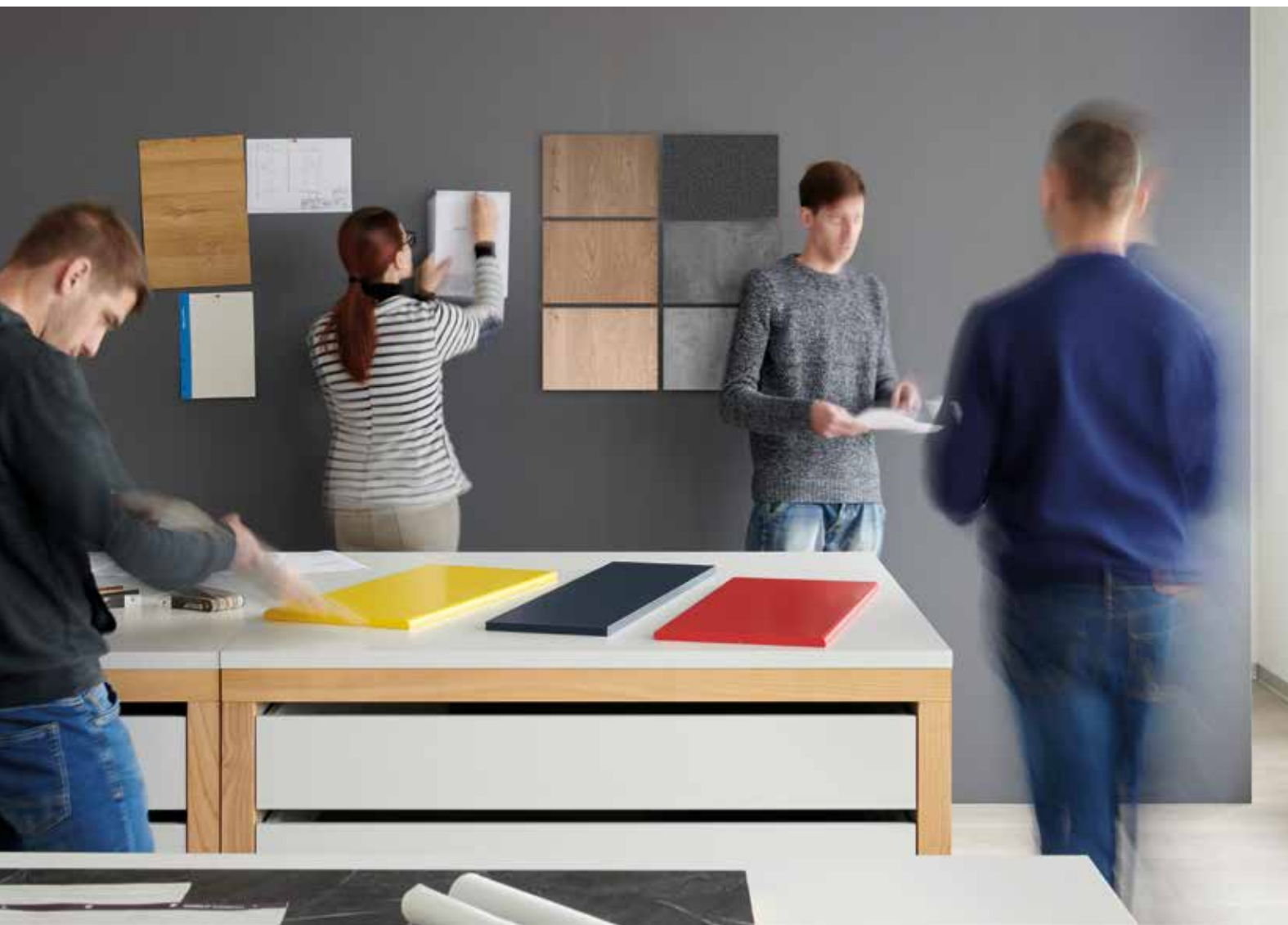
co-innovation

We are an experienced technology partner that can help you turn your idea into a scale product.

We co-design, develop and deliver your innovation, bringing your product to life and shipping it worldwide.

Offering new solutions and foreseeing market evolution is core to our development over the years, assisting our clients in each step of the project, customising the full production line to guarantee a production cycle that suits.

In brief, we can lead innovation and co-generate with our clients new products and technological processes.



people & values

Integrity and responsibility are our founding and guiding principles.

Our heritage moves us to improve everyday to:

keep a fresh and passionate focus to generate innovation

strengthen collaboration day by day in and outside the company to build relationship that last

improve and work everyday for sustainability

delivery excellence by blending creativity and know-how

